

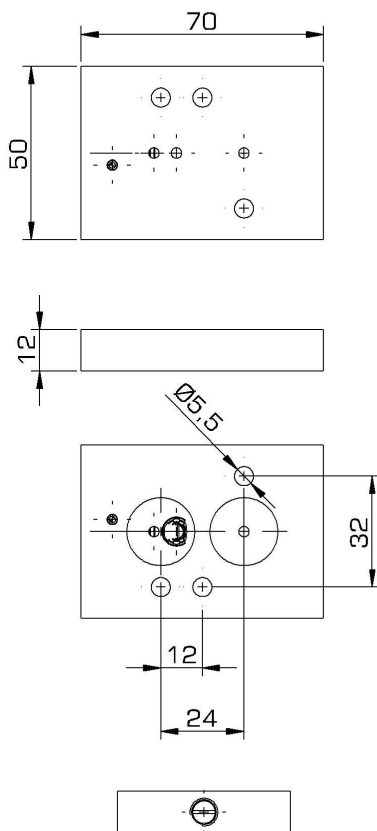
"NF"

SERIES NAMUR FLOW CONTROL

The [] NF series NAMUR flow control are designed to be wafer mounted between NAMUR solenoid valve and NAMUR actuator without tubes and fittings. These needle valves permit to restrict the air flow rate and thus allow the speed of the actuator to be controlled.

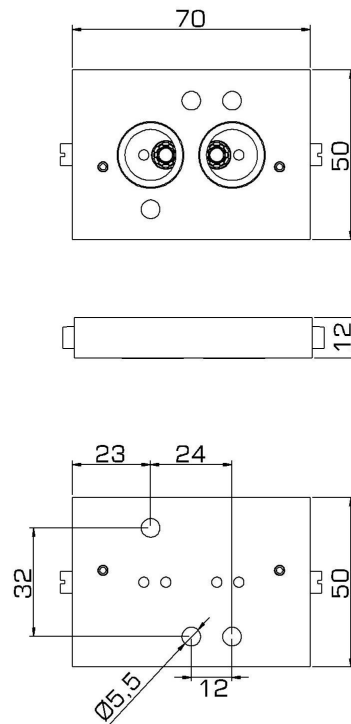
NF1

The [] NF1 NAMUR flow control is a single unidirectional needle valve. It is used to adjust closing or opening speed. Only one sense of rotation can be adjusted. It can be used both with double acting or spring return actuators.



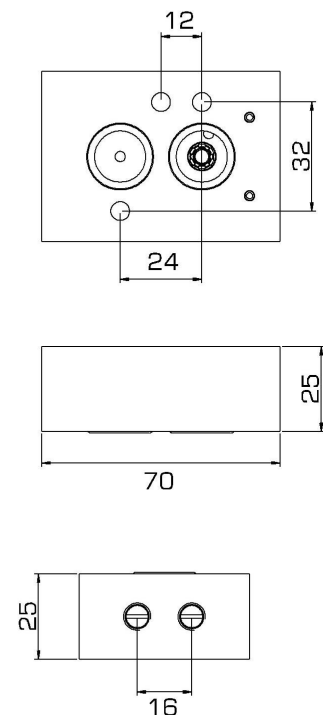
NF2

The [] NF2 NAMUR flow control is a double unidirectional needle valve for double acting actuators. It is used to adjust closing and opening speed.



NF3

The [] NF3 NAMUR flow control is a double unidirectional needle valve for spring return actuators. It is used to adjust closing and opening speed (also suitable for use with solenoid valve with air purge function).



Technical specification

Temperature range	: -20°C +80°C
Max pressure	: 8 bar
Media	: dry or lubricated non-corrosive gas compatible with nitrile seals
Nominal bore	: 0 - 3 mm

Materials

Body	: anodised aluminium
Screws	: stainless steel
Seals	: nbr

